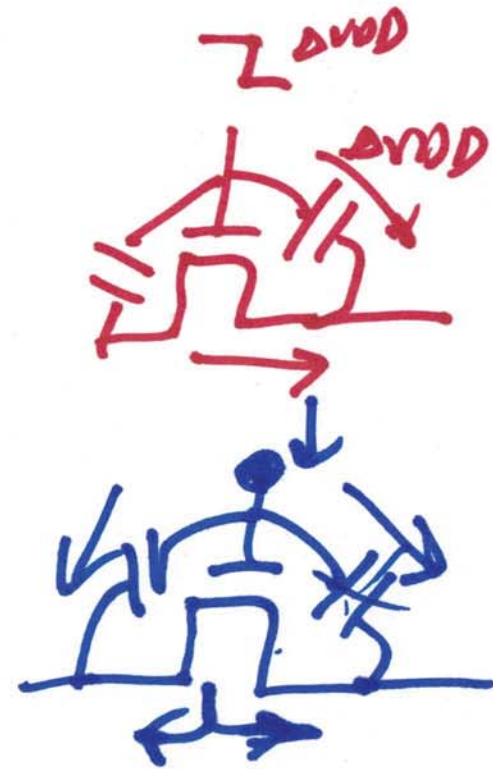
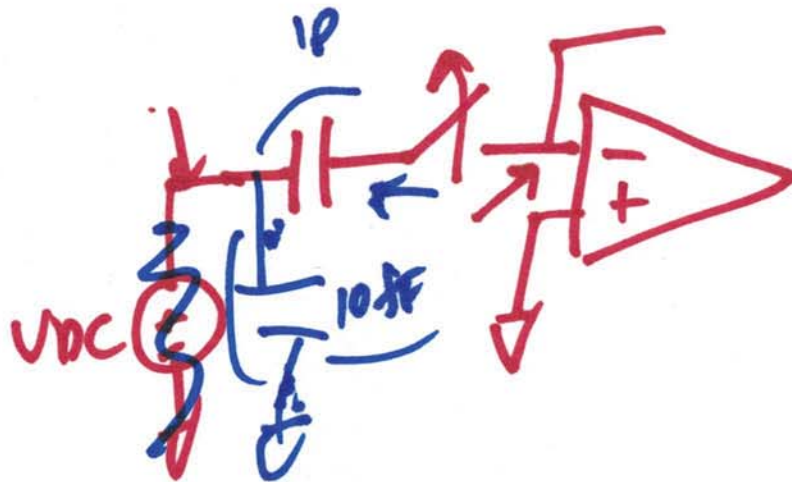
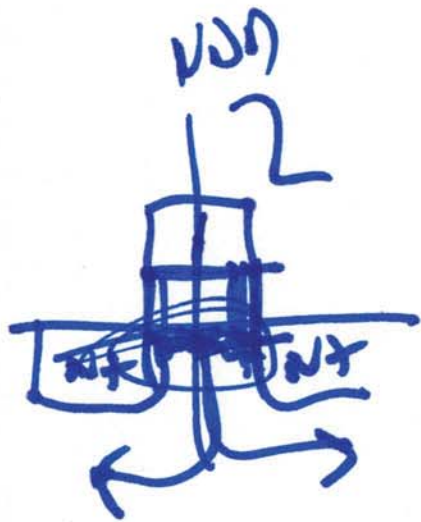


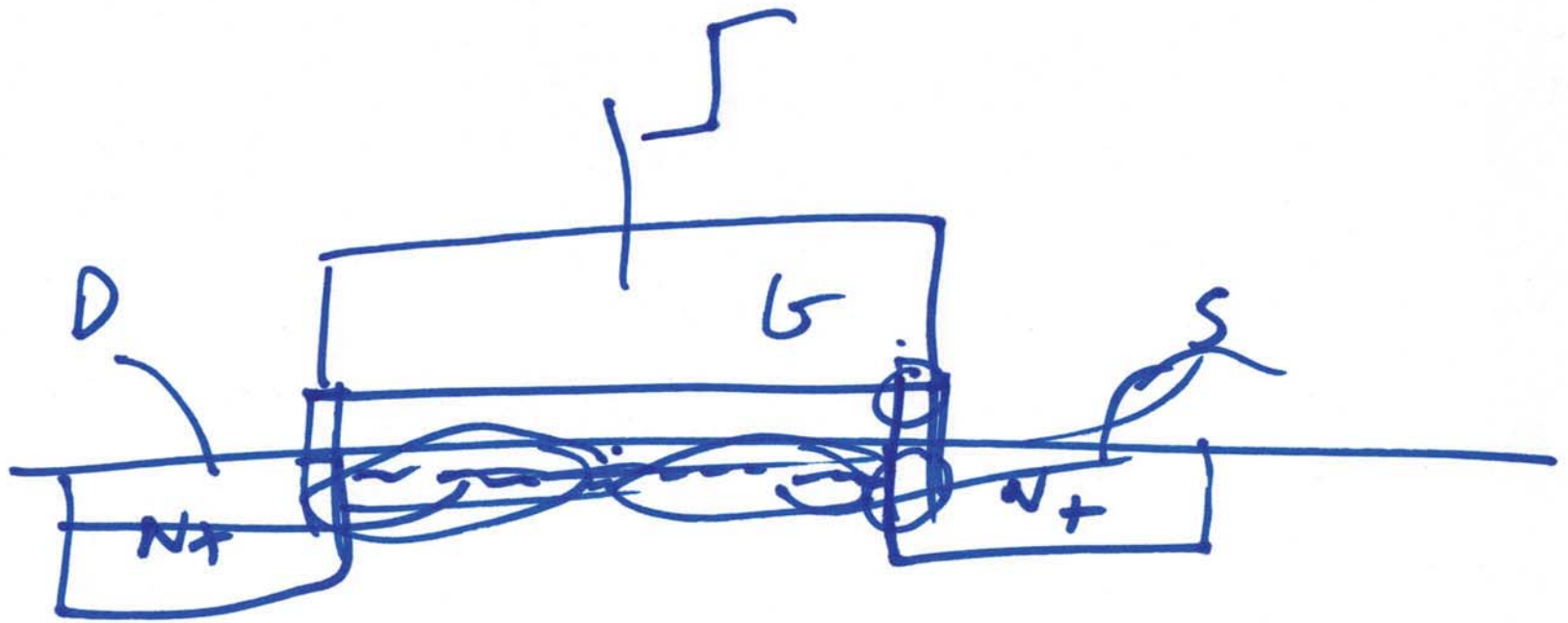
ECG 720 Advanced Analog IC Design

March 3, 2016

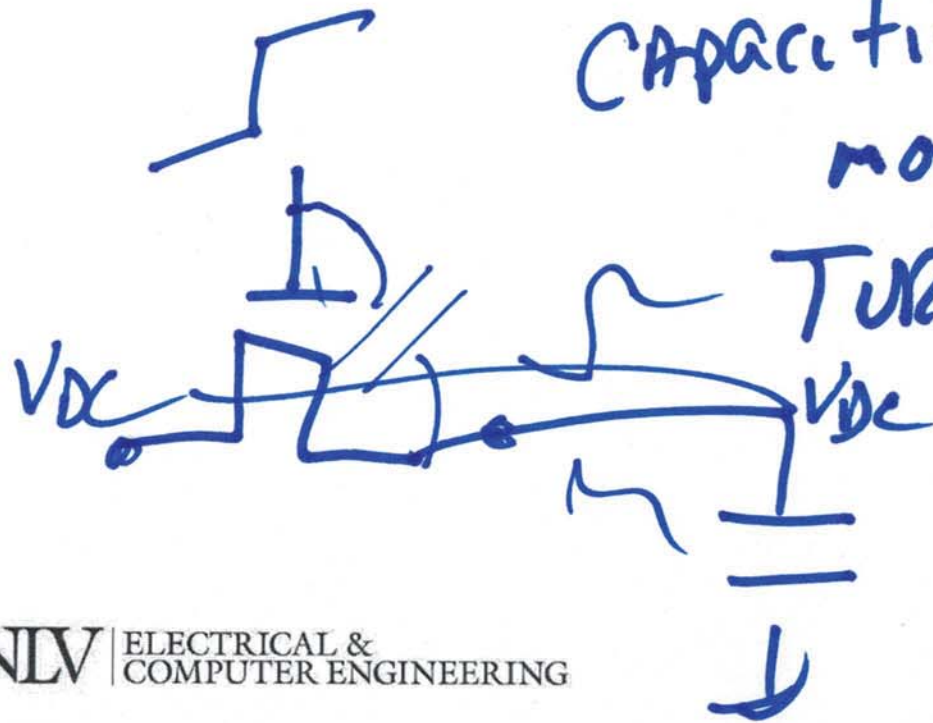
Lecture 14,



1)

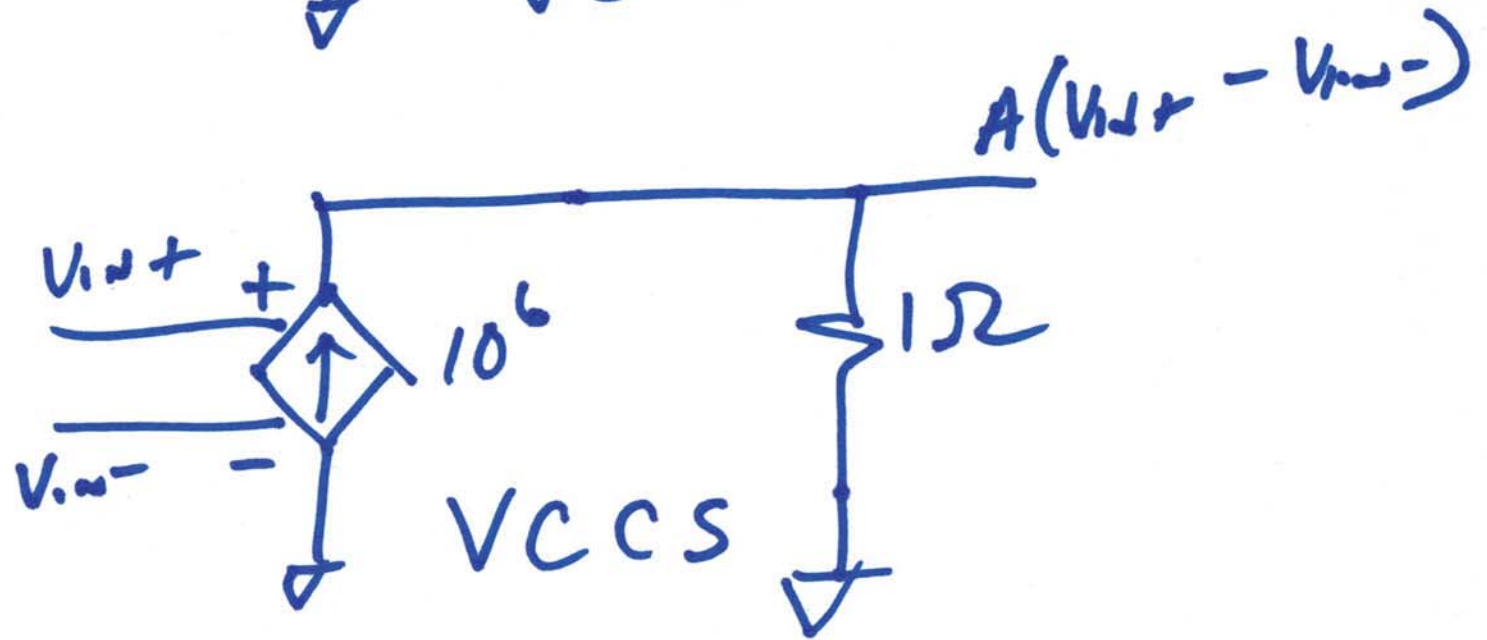
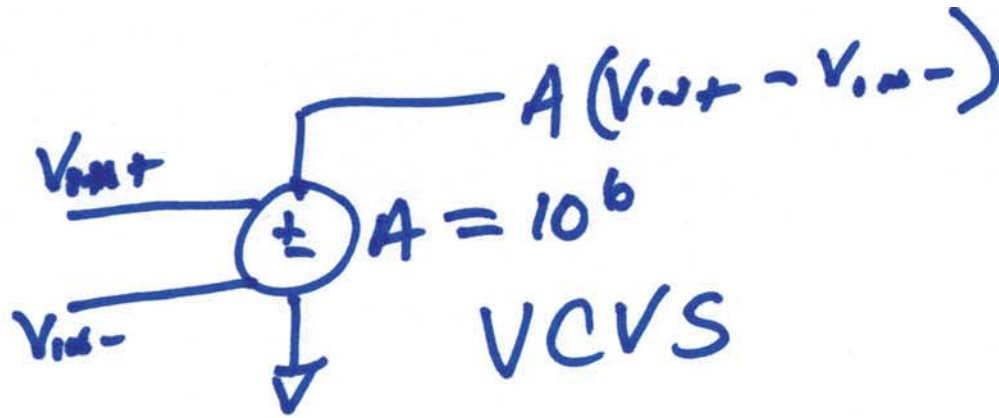


Capacitive feedthrough
more important



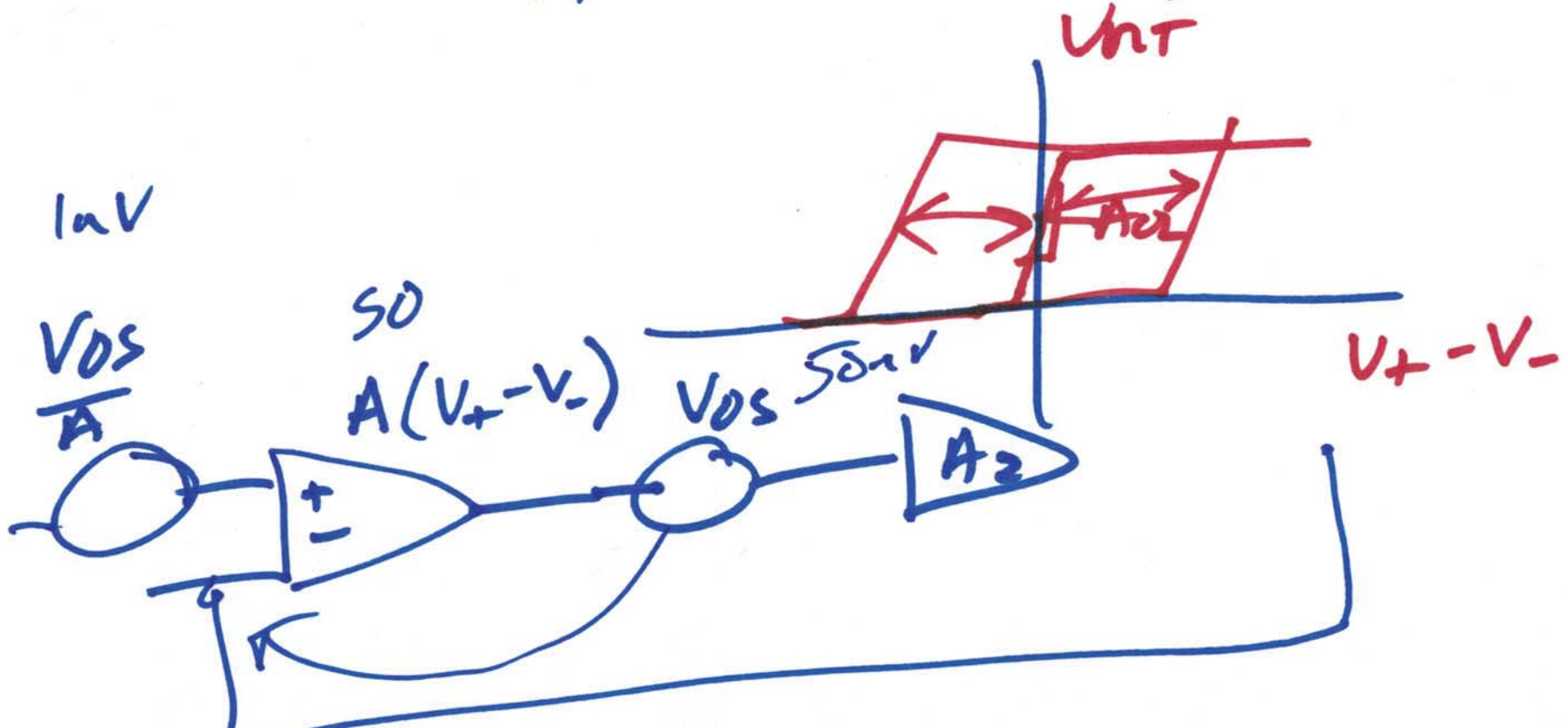
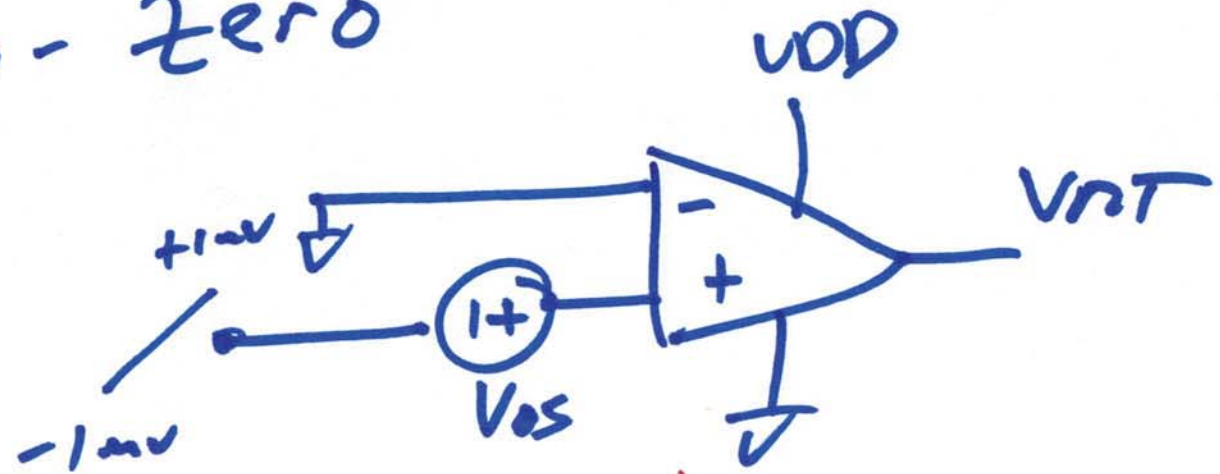
TURNING SWITCHES
ON

2)

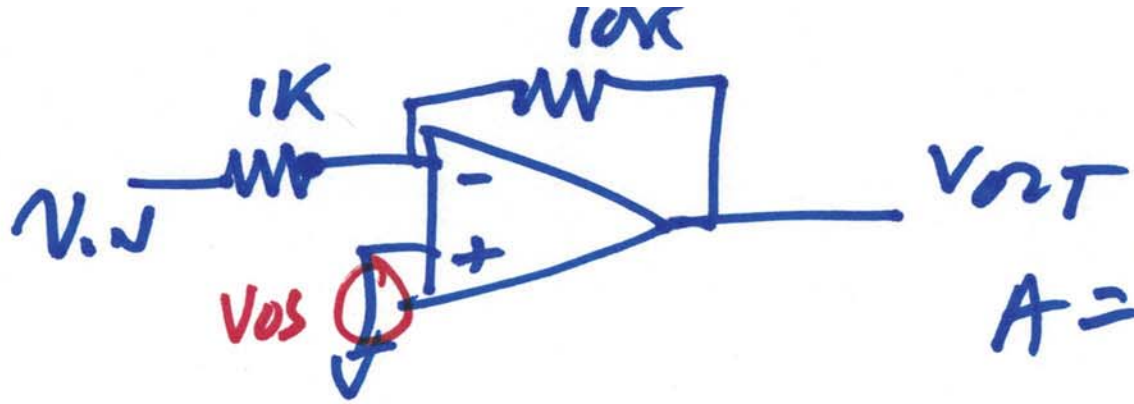


3)

Auto-zero



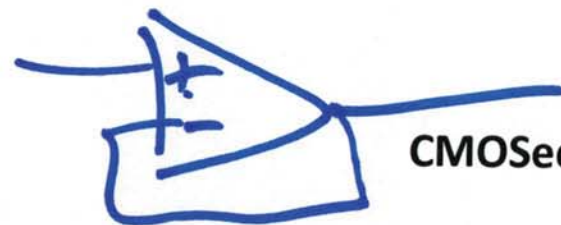
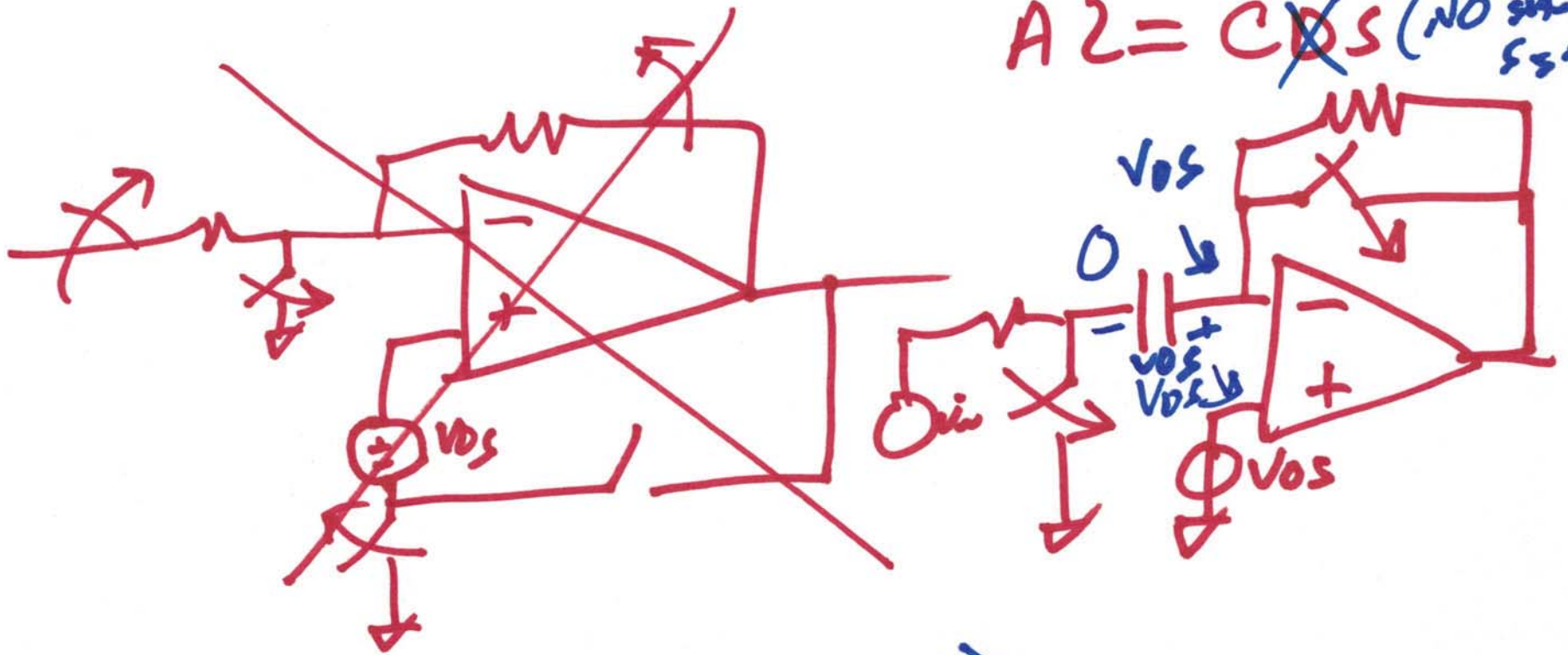
4)



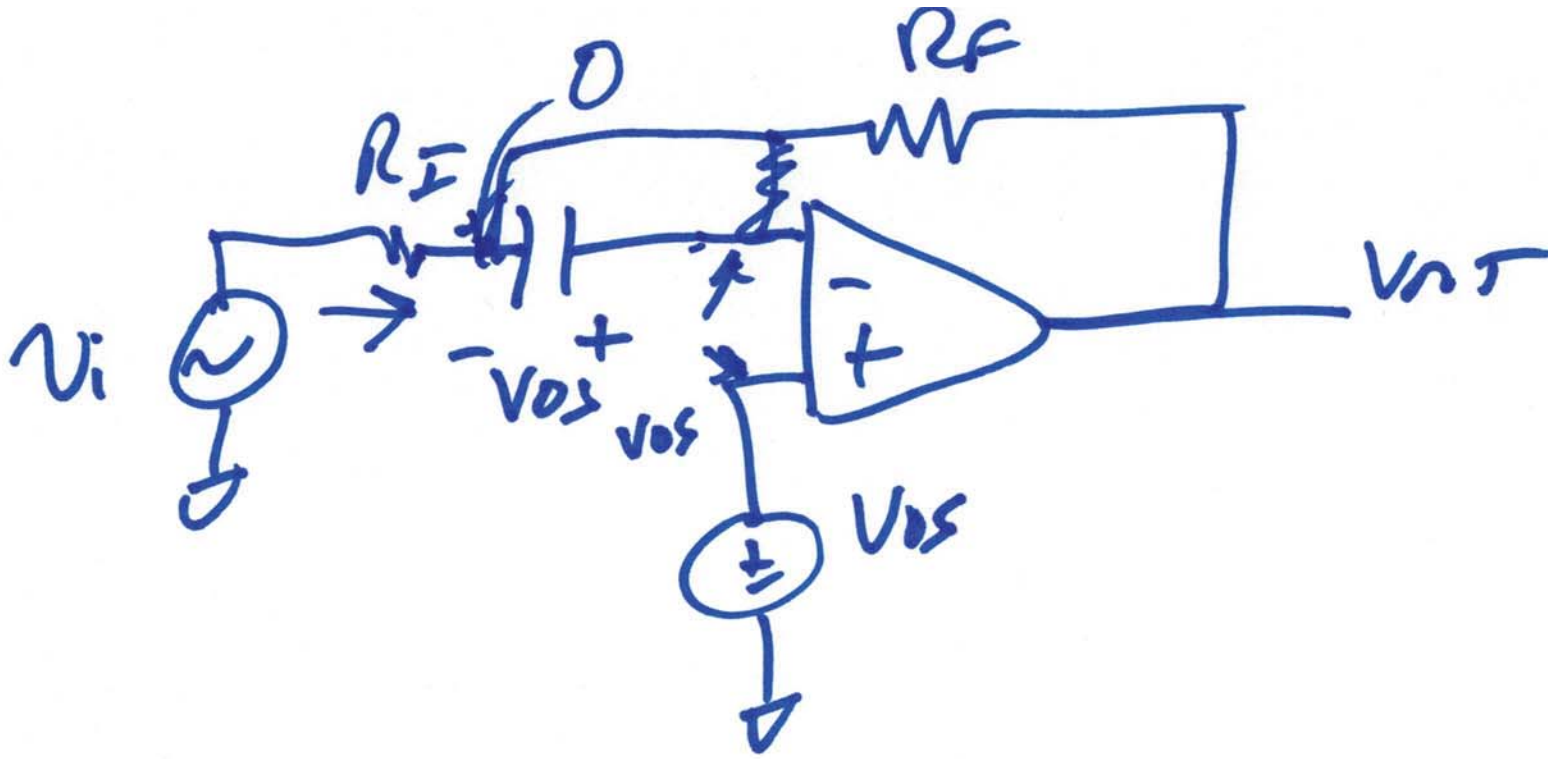
$$A = \frac{V_{out}}{V_{in}} = -10$$

$$V_{out} = V_{0S} \left(1 + \frac{10k}{1k} \right)$$

$$A_2 = \text{CDS (NO sampling signal)}$$



5)



b)