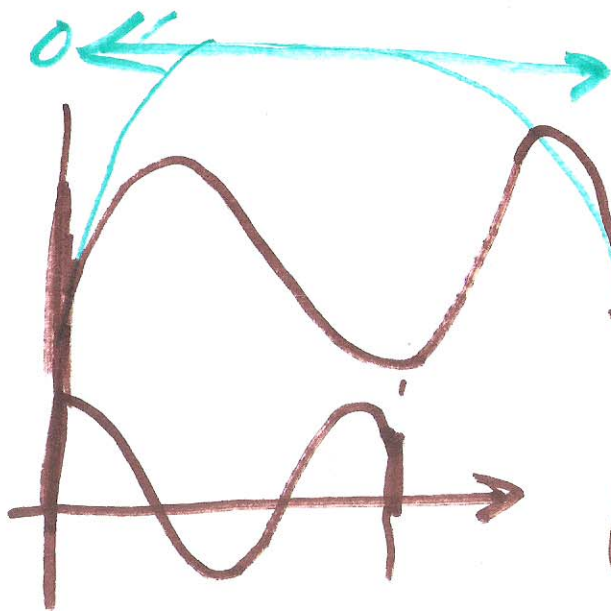


Lecture 20

Oct. 31, 2014



$K_{path} = 8$

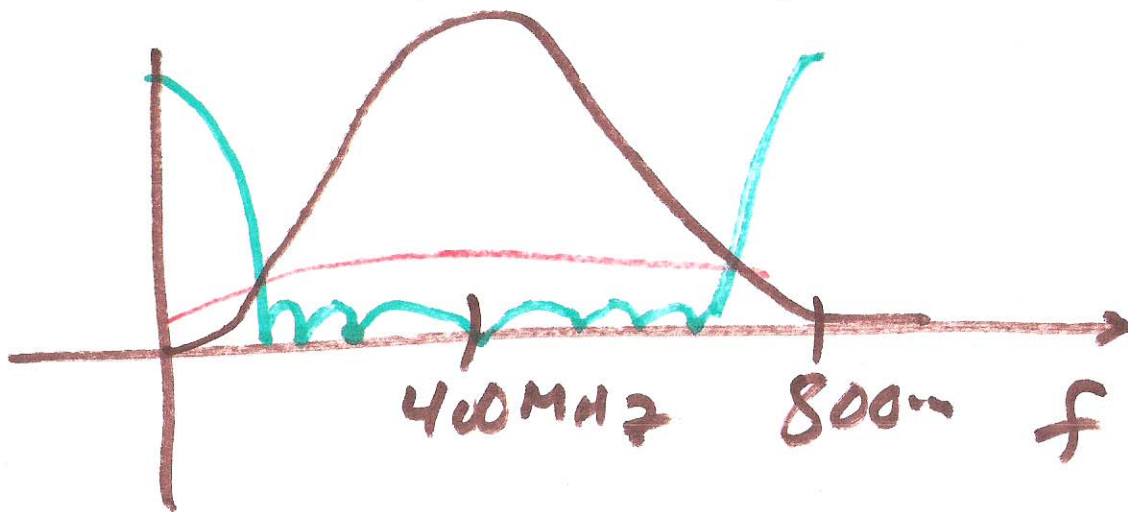


8 paths

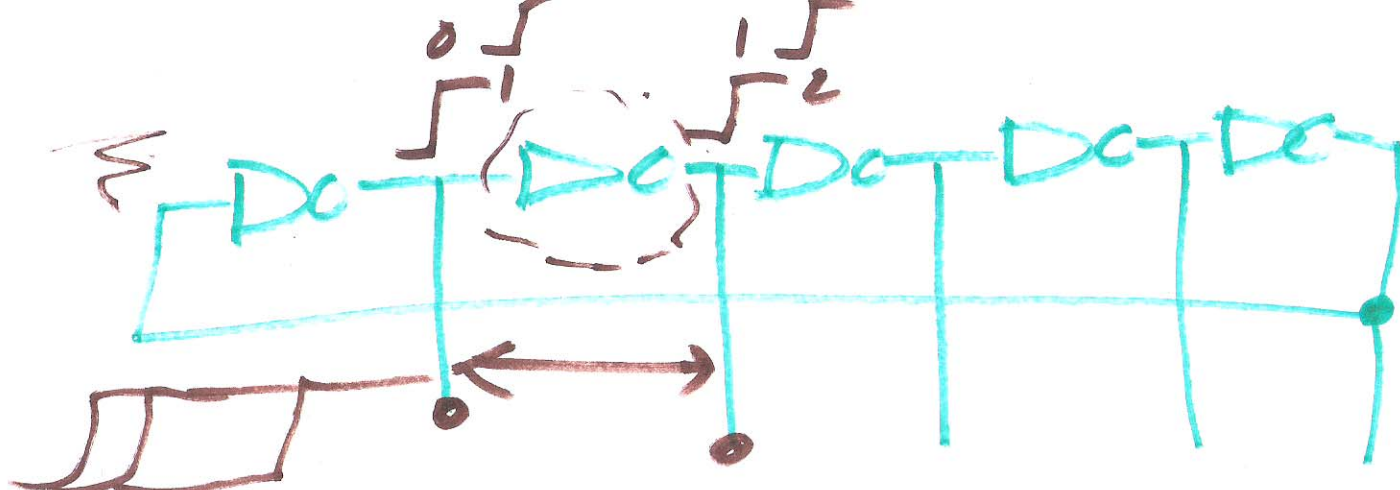
$$f_{s, new} = f_s \cdot K_{path}$$

8 · 100 MHz

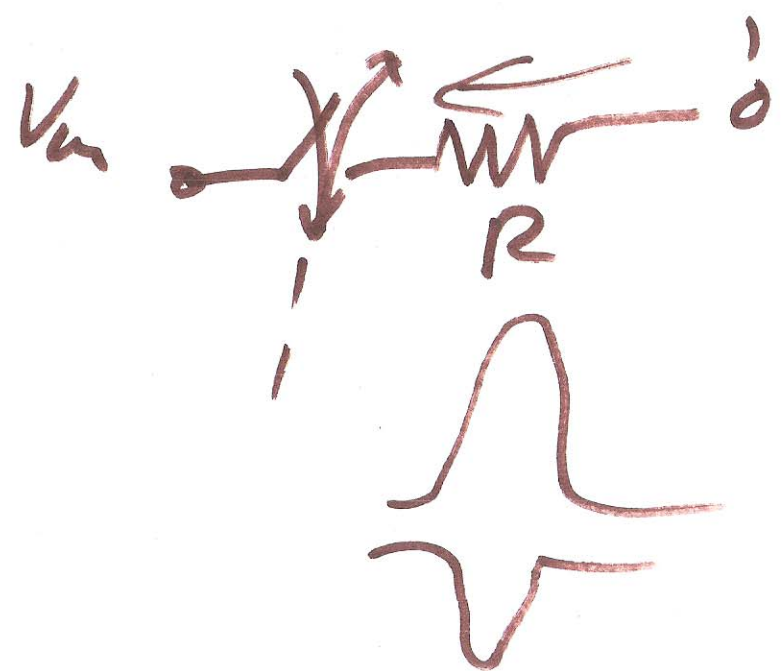
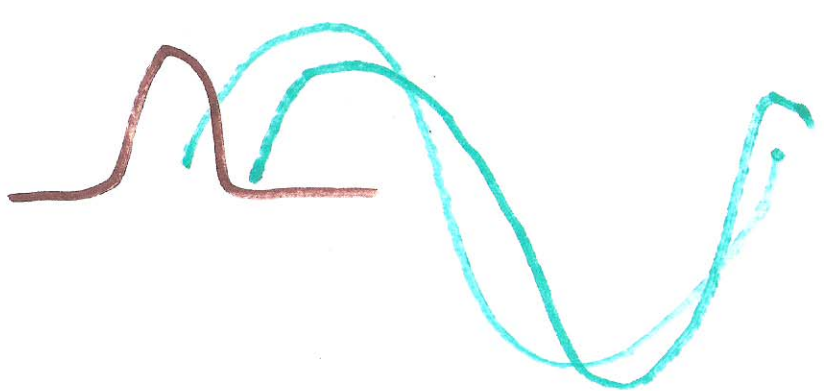
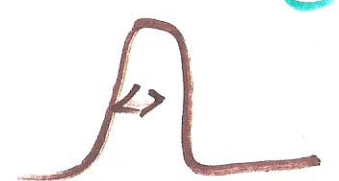
$$f_{s, new} = 800 \text{ MHz}$$



1)



1 2 3 Clock jitter \rightarrow Amplitude modulation in the output



2)