

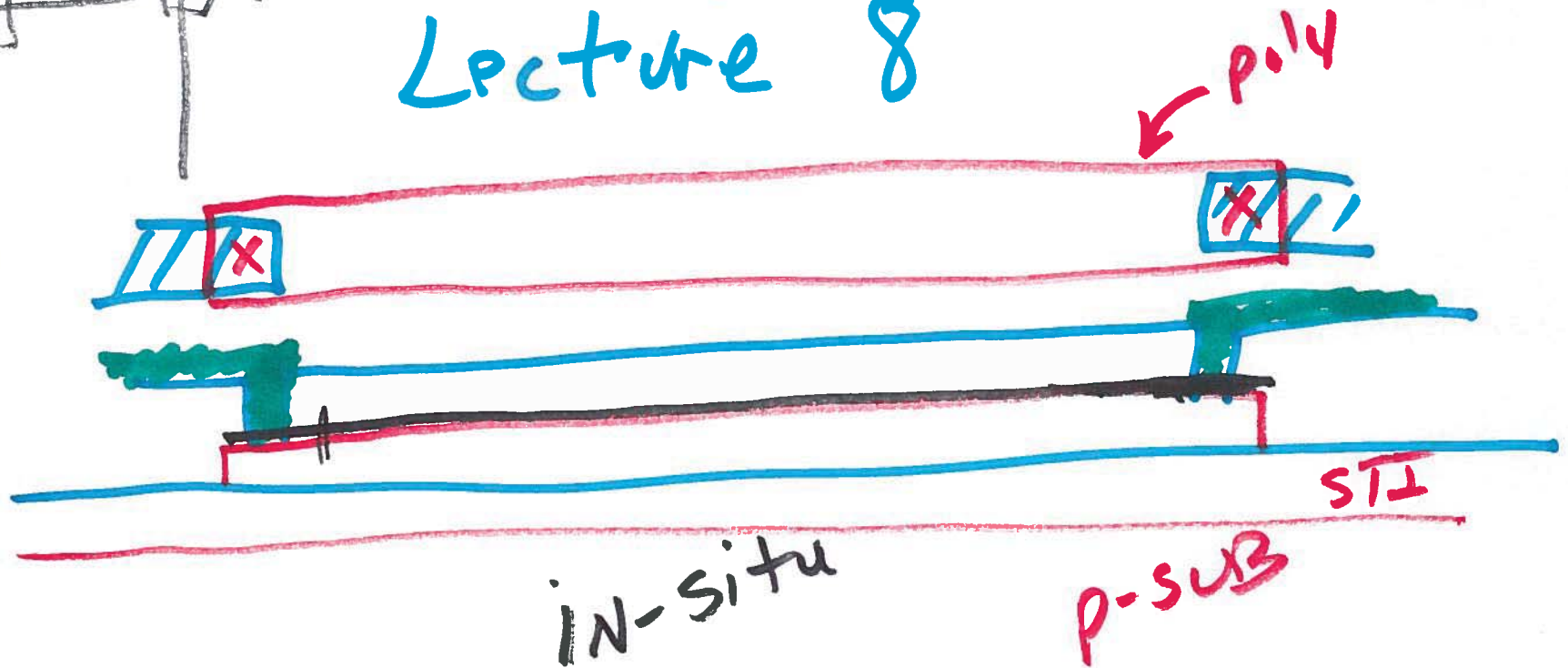
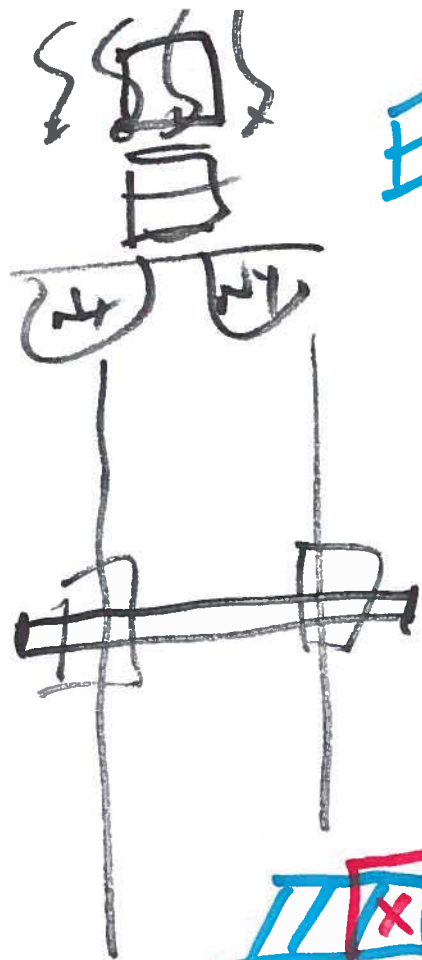
EE 421 / ECG 621

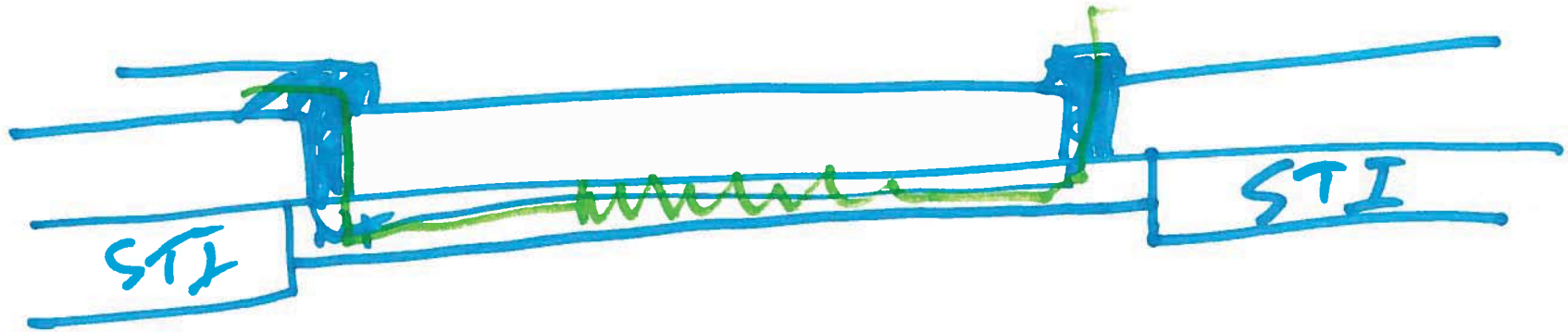
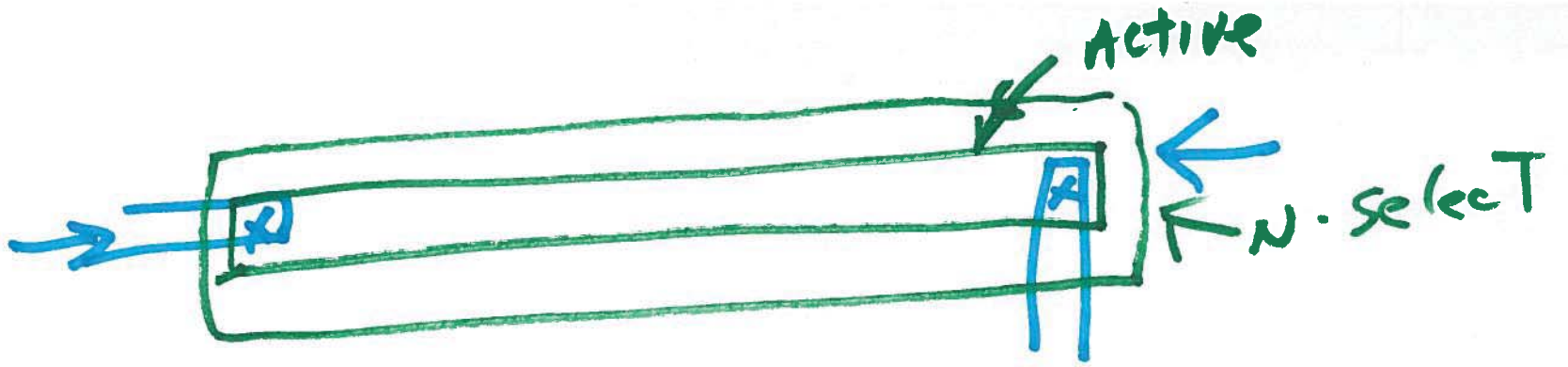
Digital IC Design

9/26/2016

$R_D = 20\Omega$

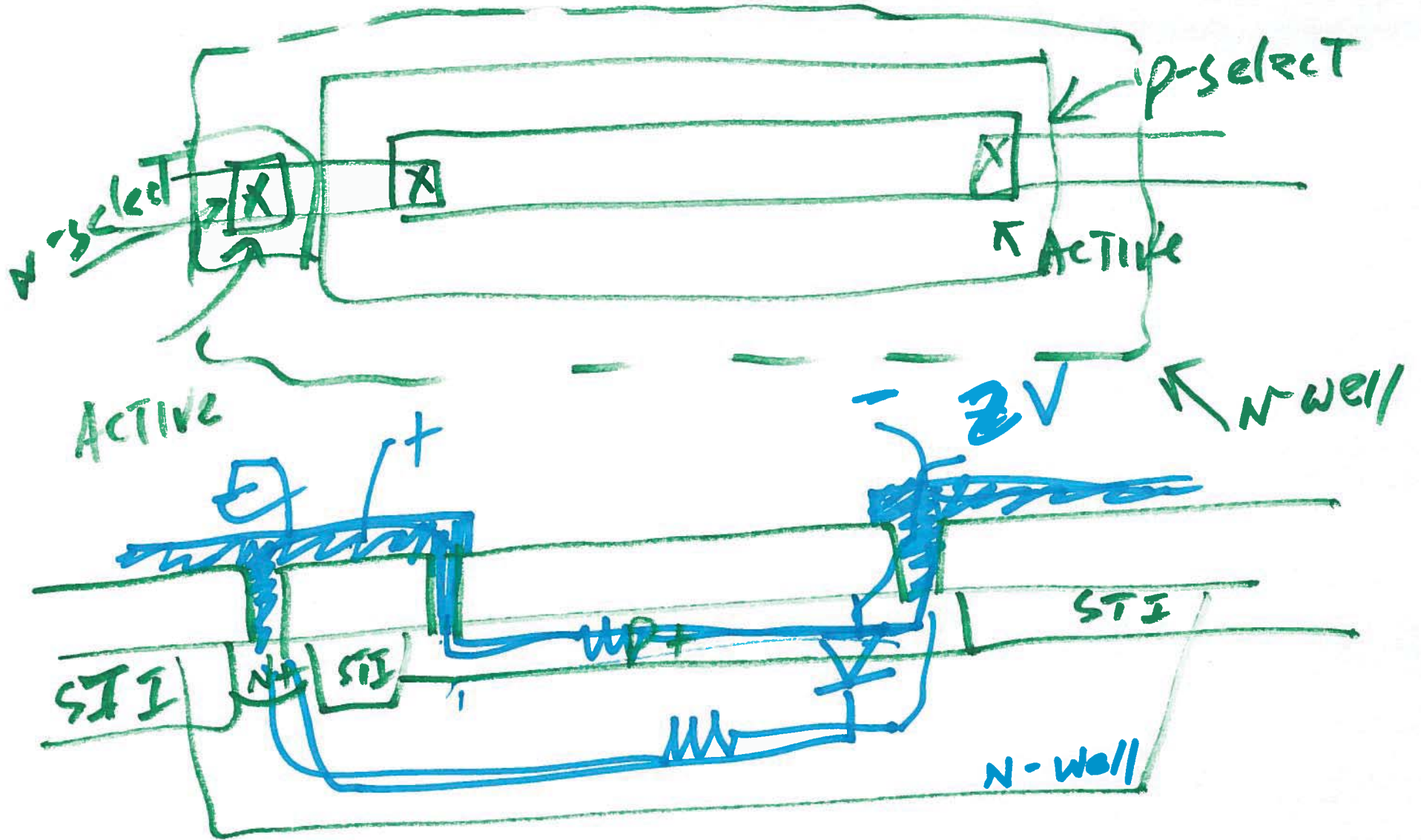
Lecture 8





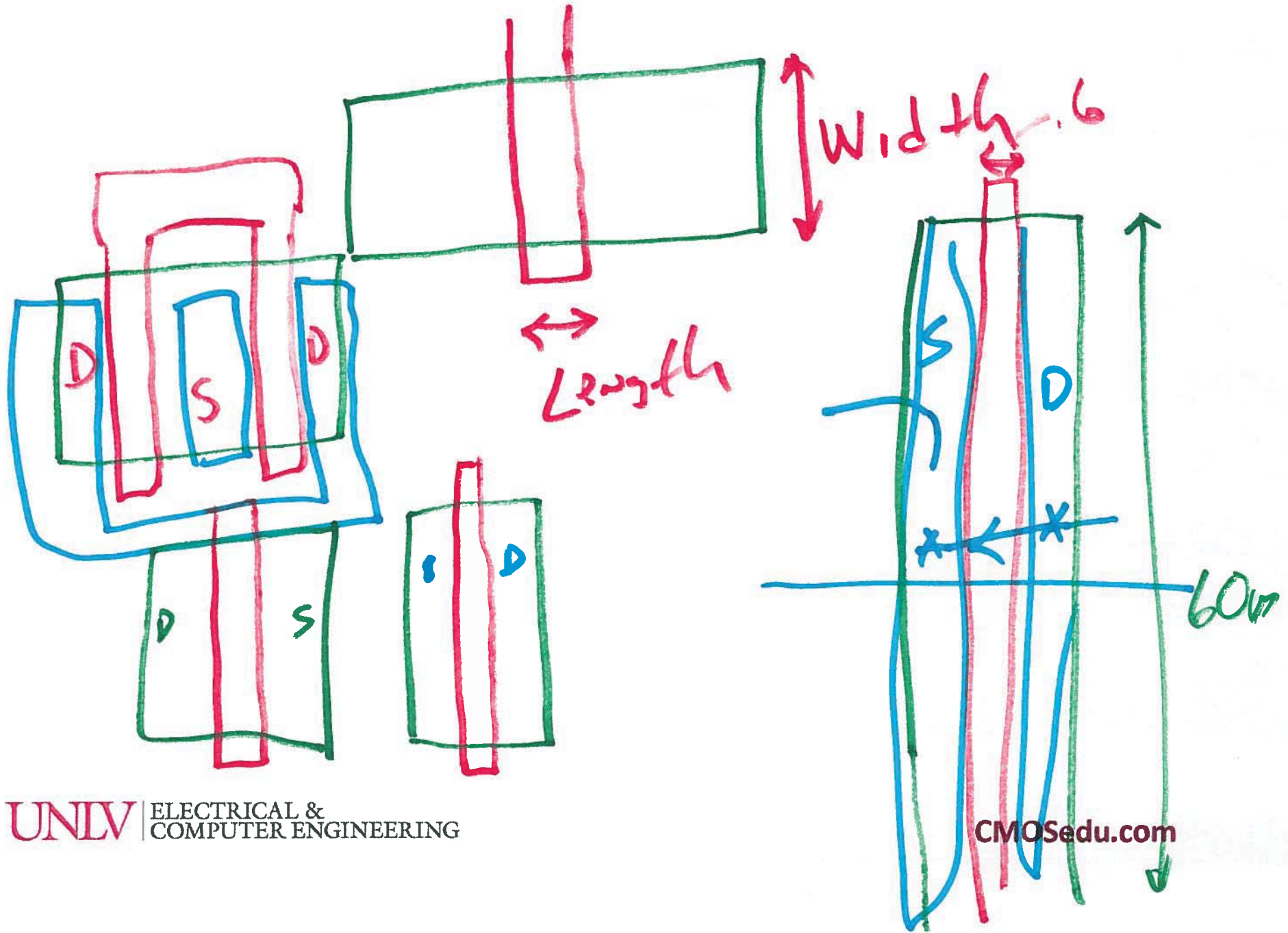
P-S-B

2)

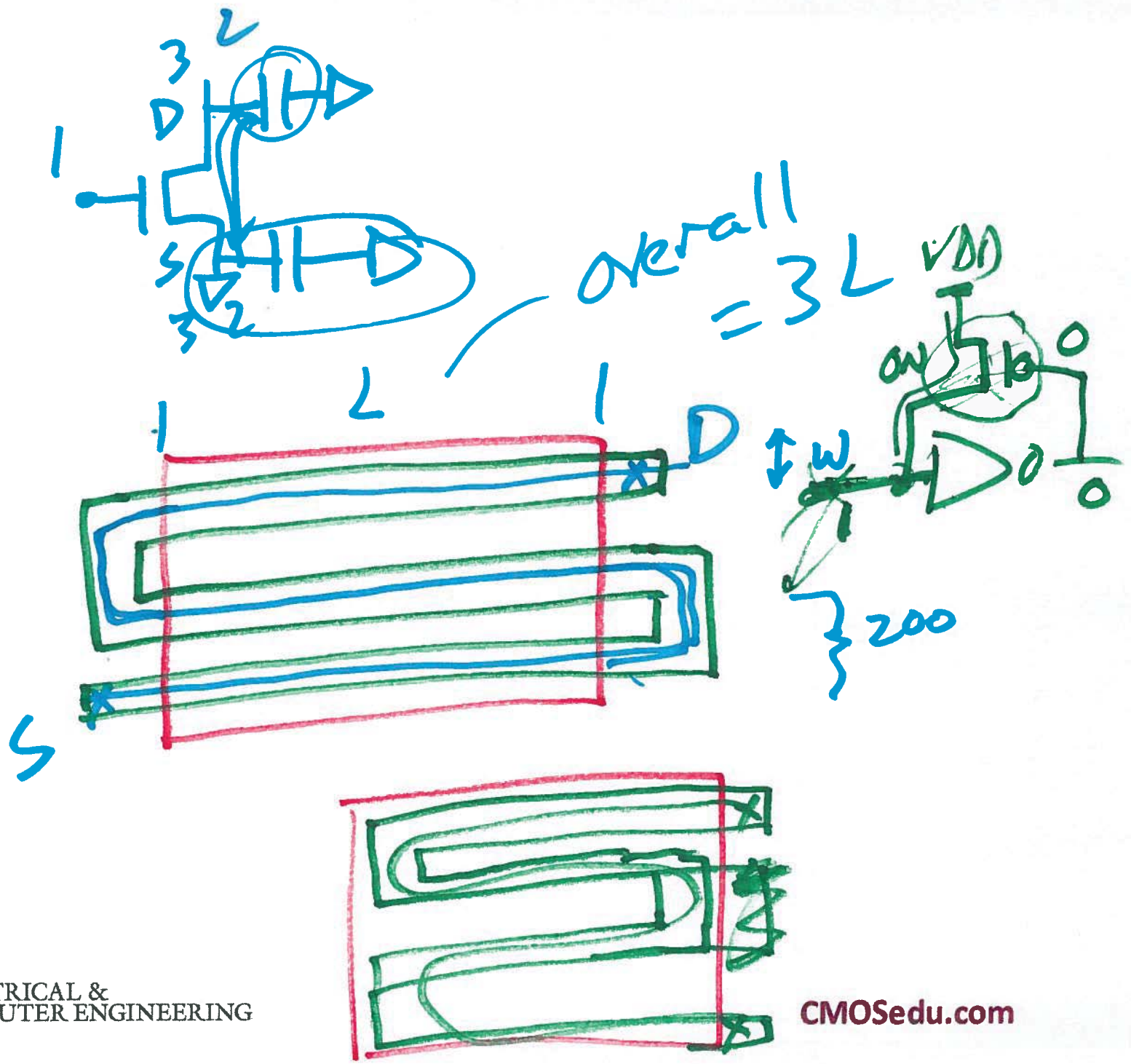


3)

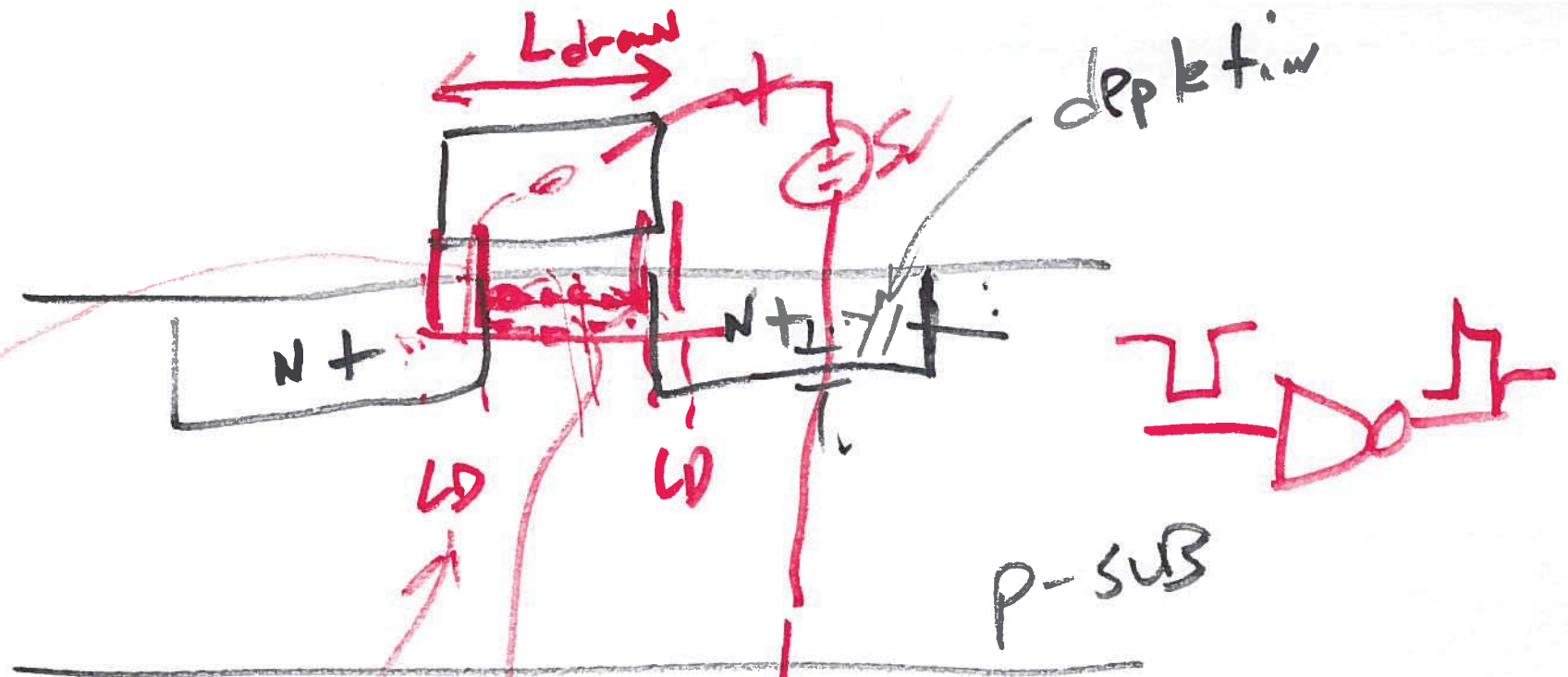
$$L_{04}/0.6\mu = W/L$$



4)



5)



Lateral diffusion eff = $L_{draw} - 2L_0$

overlap capacitance = $L_0 \cdot W \cdot \frac{\epsilon_{ox}}{t_{ox}}$

6