

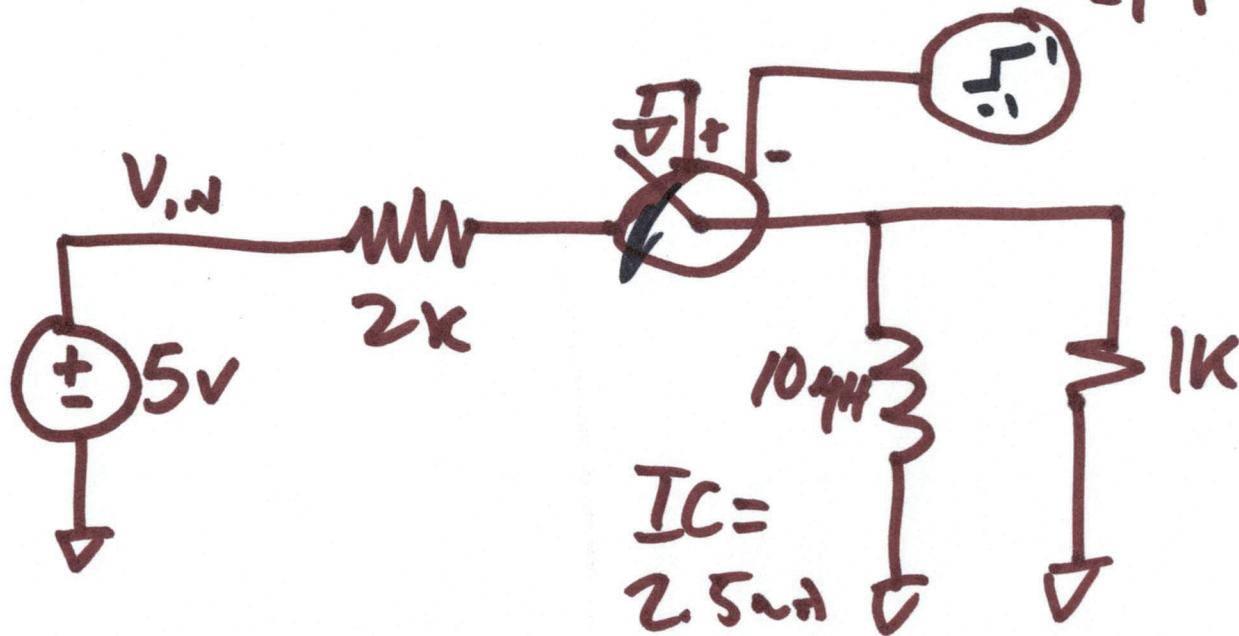
EE 421/ECG 621

Digital IC Design

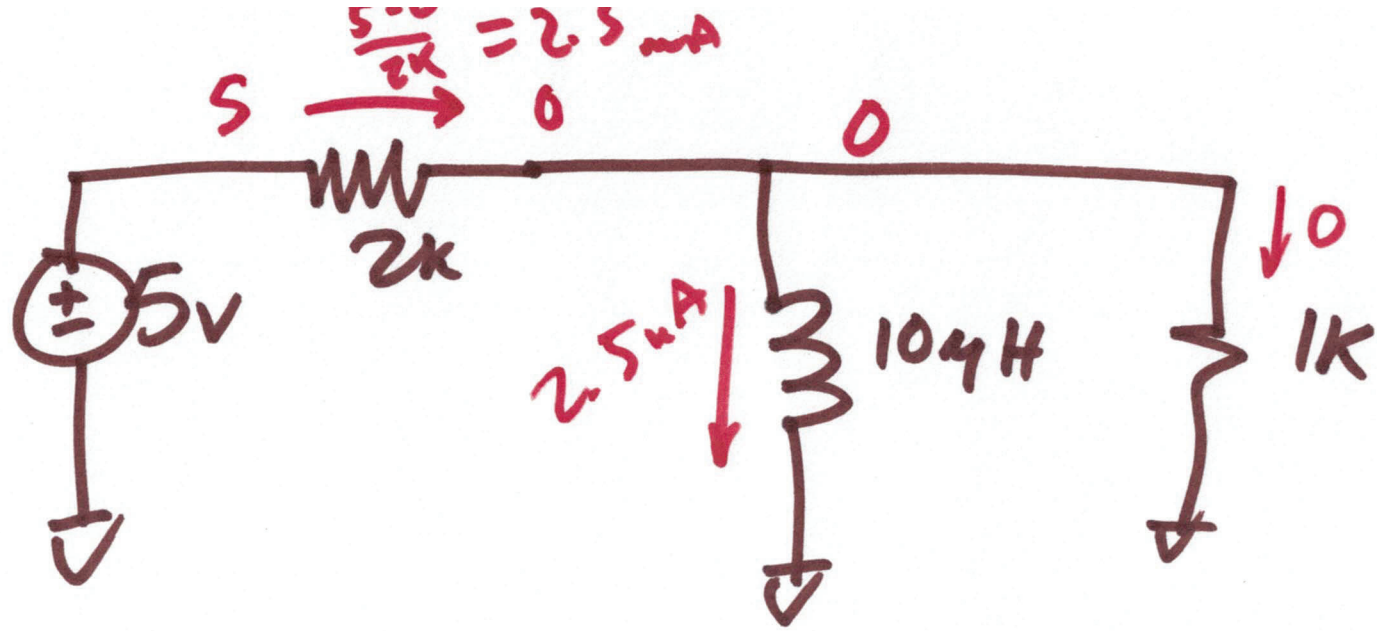
Lecture 13

OCT. 6, 2021

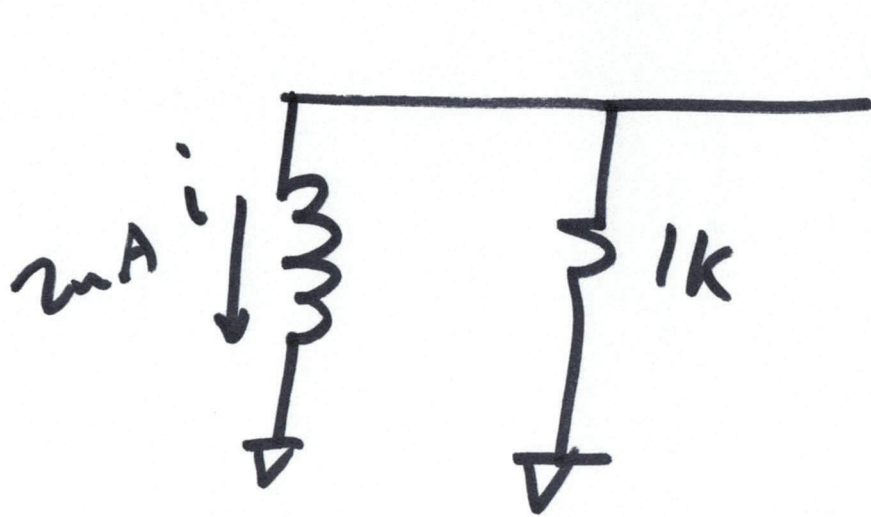
-112N 1p 1p 1000N



11



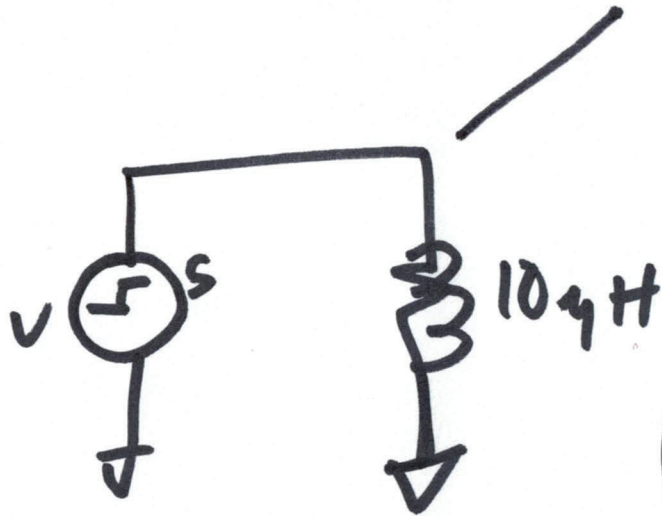
2)



$$v_{ovr} = ?$$

$$i_L(t) = ?$$

$$v = L \cdot \frac{di}{dt}$$



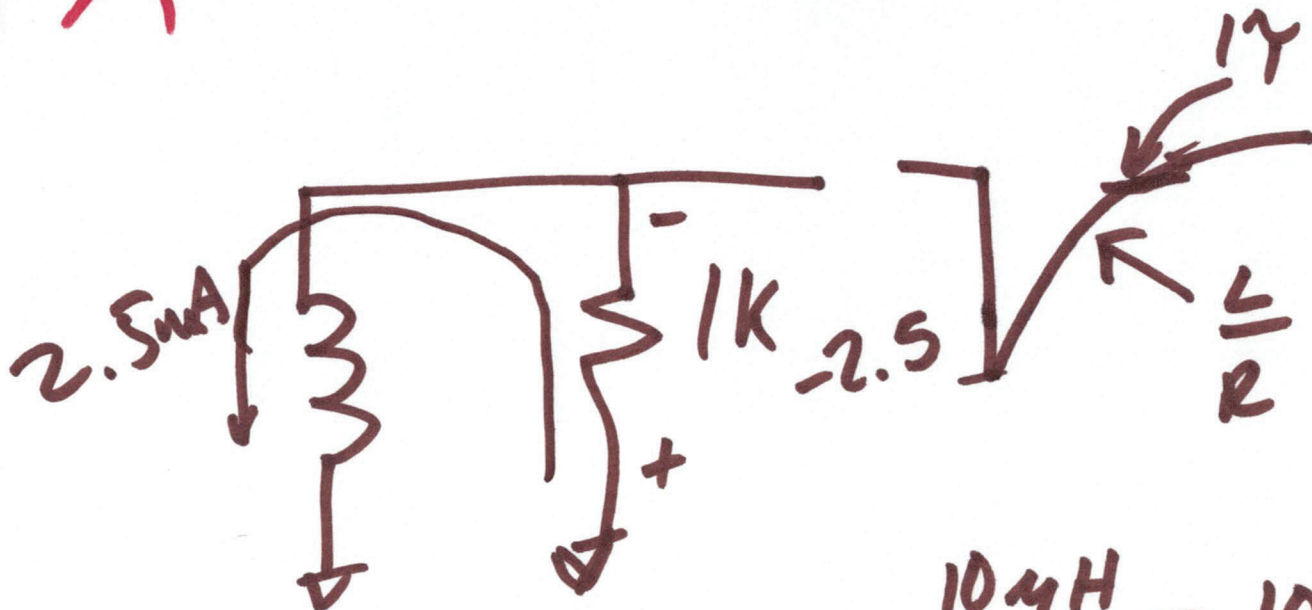
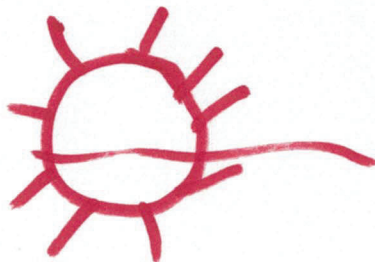
$$\frac{5}{104H} = \frac{1}{2} \frac{A}{4s} = \frac{di}{dt}$$

$$\int_0^{i(t)} di = \int_0^t \frac{1}{2} \frac{A}{4s} dt$$

$$i(t) = \frac{1}{2} \frac{A}{4s} \cdot t$$

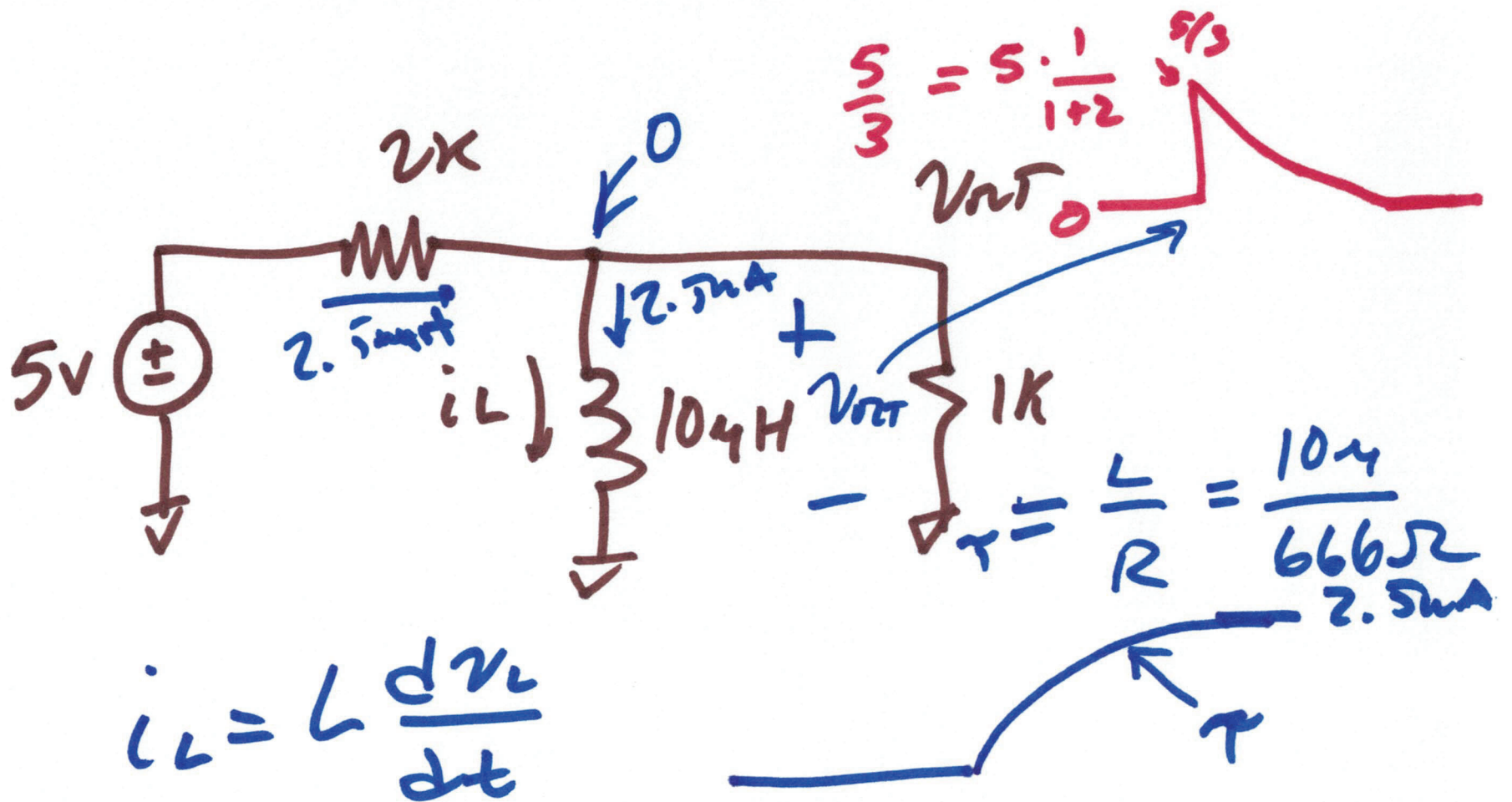
3)

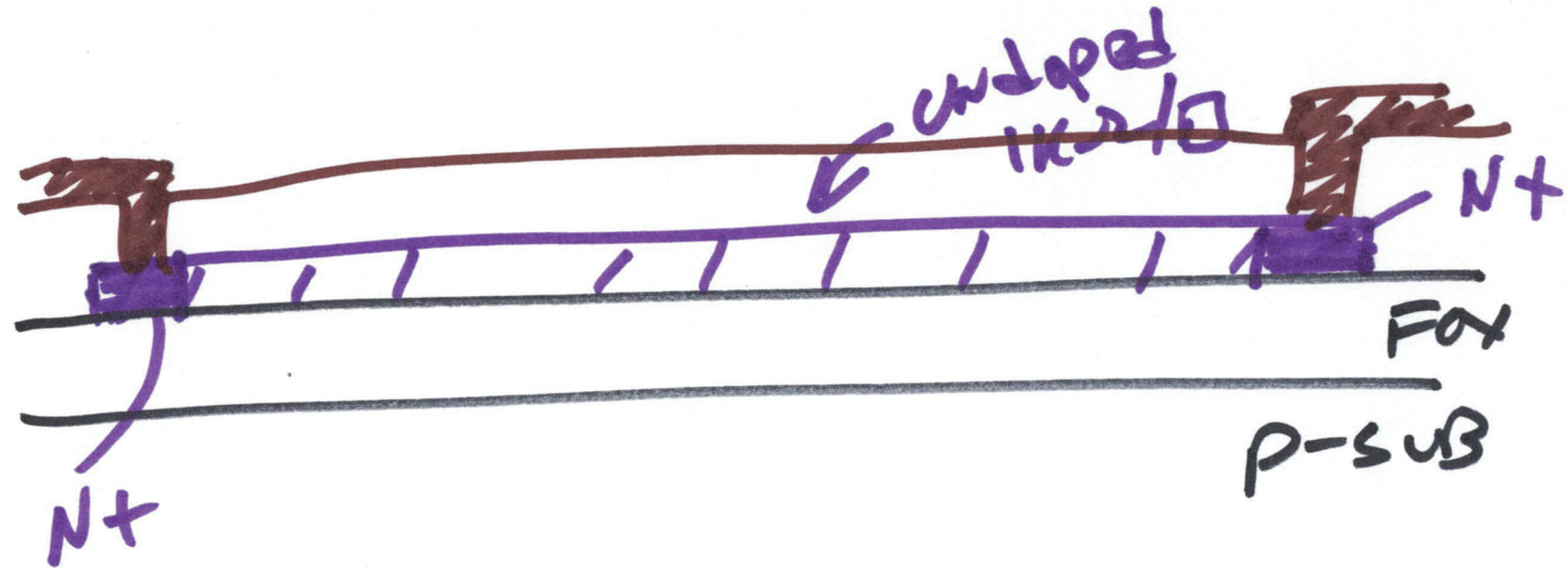
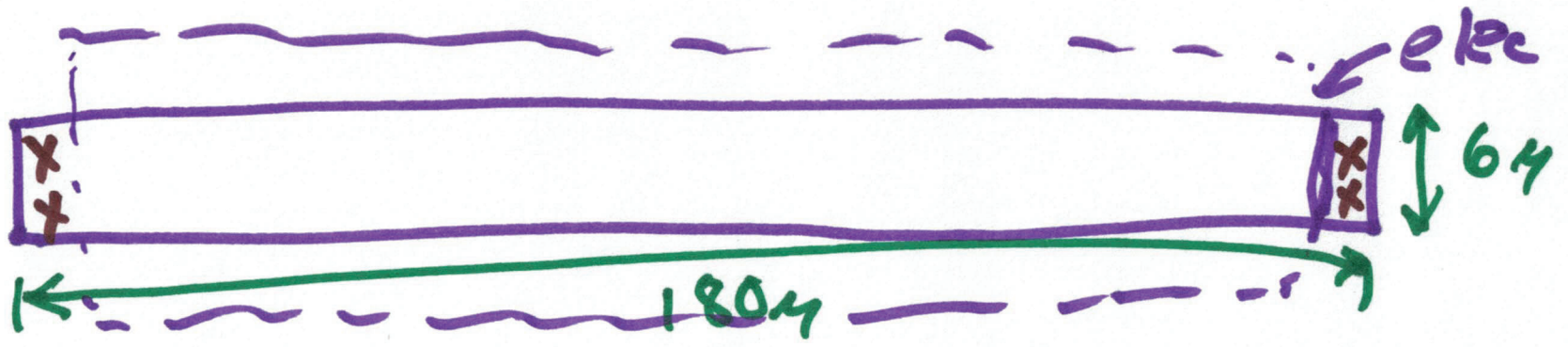
20psi



$$\frac{10\mu H}{1k} = 10ns$$

4)





6)

