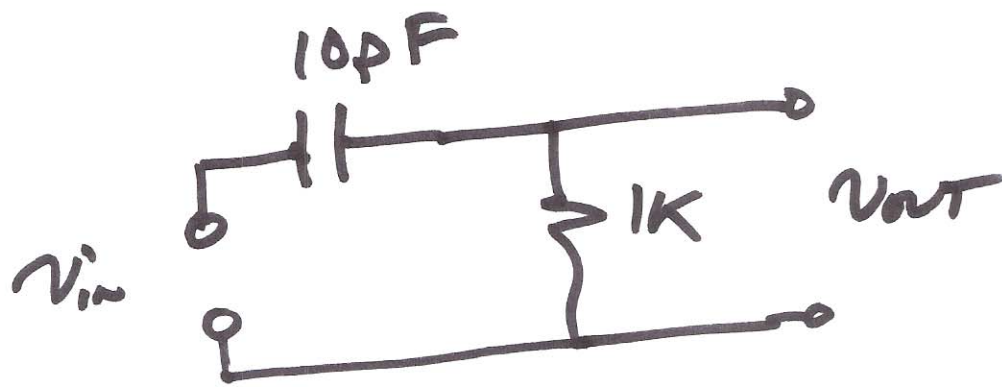
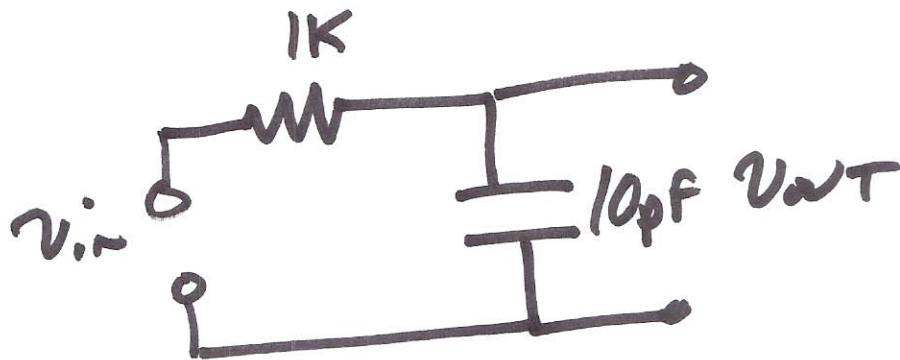


H.W. #3 EE 422 & ECG 622

Sketch the frequency response, (Bode plots, $|H|$ & \angle) and verify with SPICE, of the following circuits.



If $v_{in} = 1V \cdot \sin(2\pi \cdot 20MHz \cdot t)$
Then, using your Bode plot, sketch
the v_{in} & v_{out} together in the
time domain. Verify with
SPICE and a .TRAN simulation.